



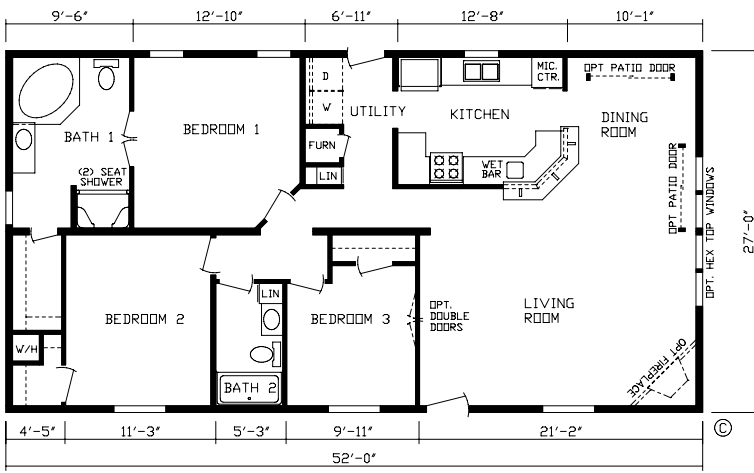
Foxwood



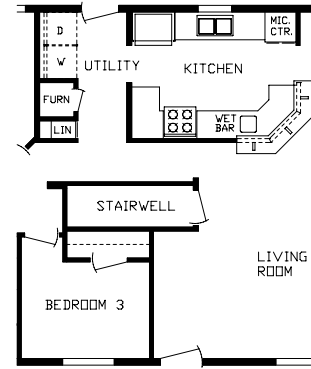
*Homes Built With
Your Lifestyle In Mind*



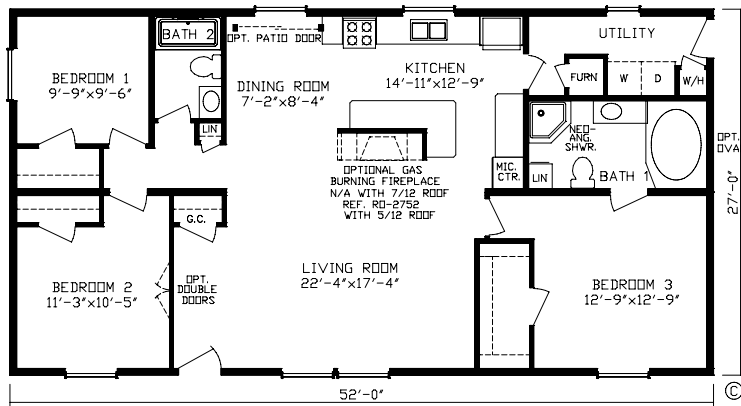
www.fairmonthomes.com



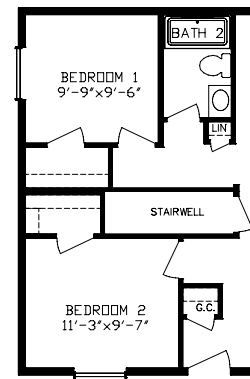
Lake Charles Estate Order No. 66115 1,404 Sq. Ft.
Reverse Floorplan Available



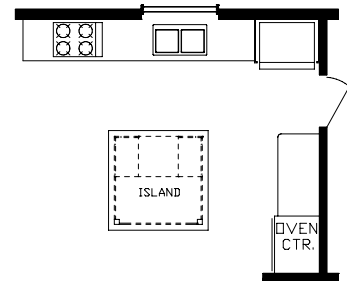
Basement Access



Lefton Manor Order No. 66109 1,404 Sq. Ft.
Reverse Floorplan Available



Basement Access



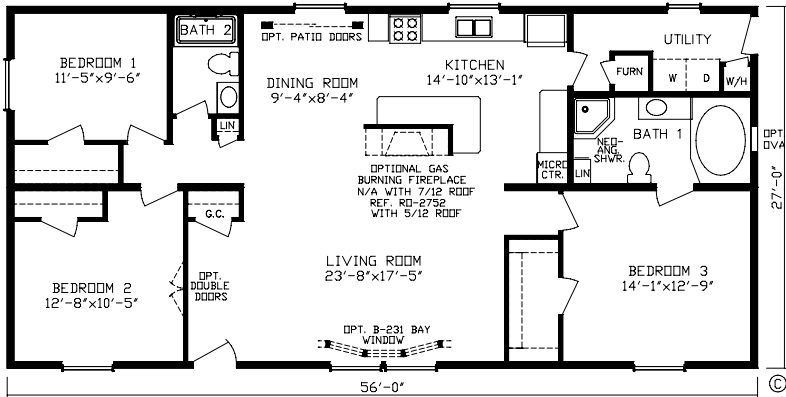
RO-4157

**Optional Kitchen of The Lefton Manor
and The Oakfield Estate RO-4157***

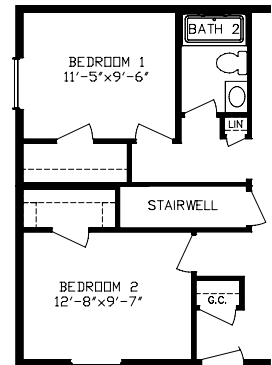
Energy Efficient Homes



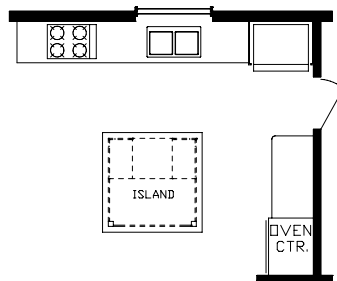
Oakfield Estate Order No. 66110



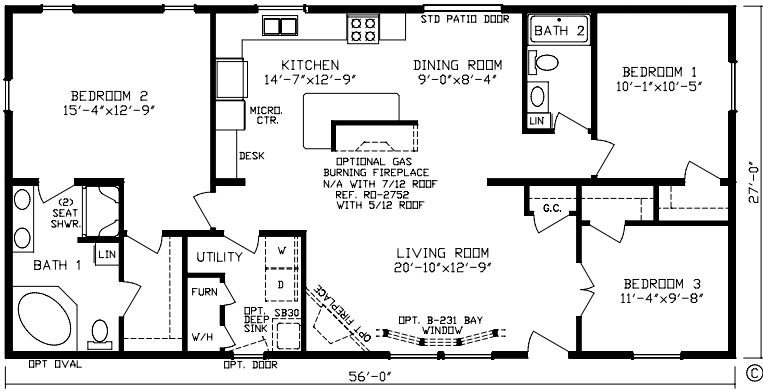
Oakfield Estate Order No. 66110 1,512 Sq. Ft.
Reverse Floorplan Available



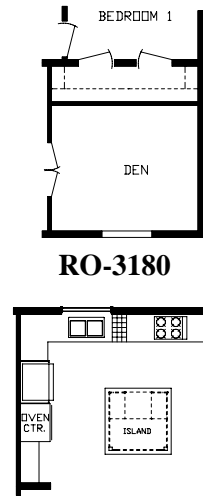
Basement Access



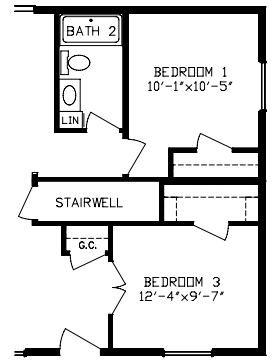
RO-4157



Marshall Estate Order No. 66112 1,512 Sq. Ft.
Reverse Floorplan Available

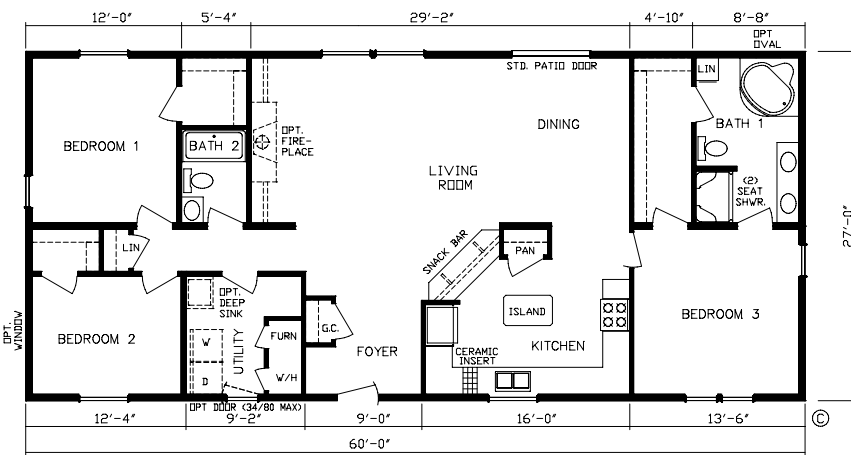


RO-3180

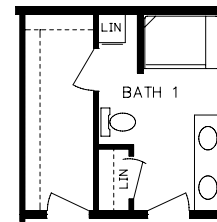


Basement Access

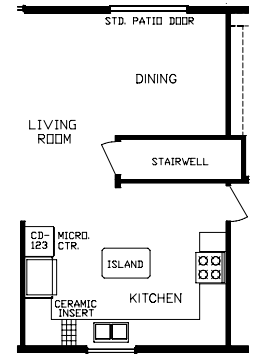
RO-4162



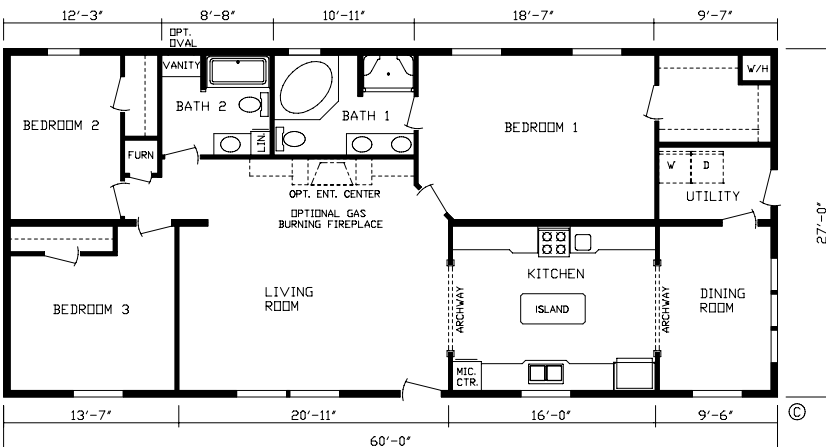
Prescott Estate Order No. 66111 1,620 Sq. Ft.
Reverse Floorplan Available



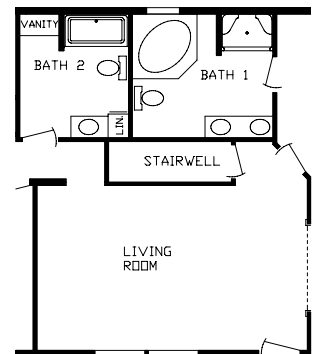
RO-3950



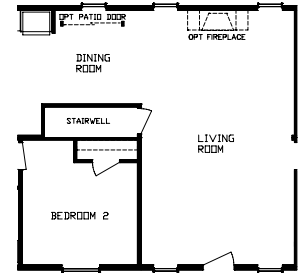
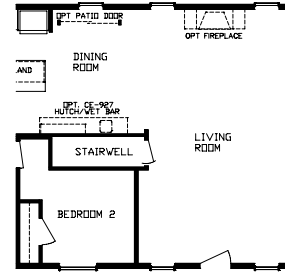
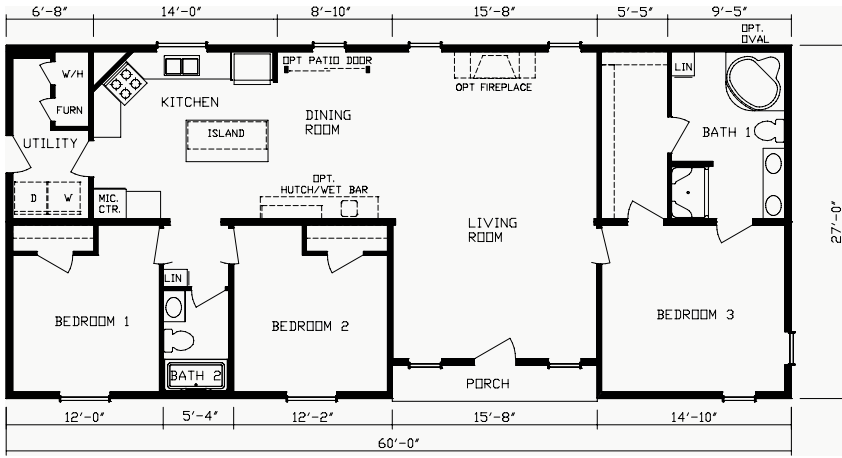
Basement Access



Manchester Estate Order No. 66117 1,620 Sq. Ft.
Reverse Floorplan Available



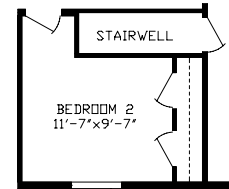
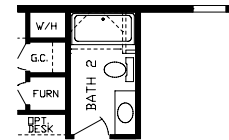
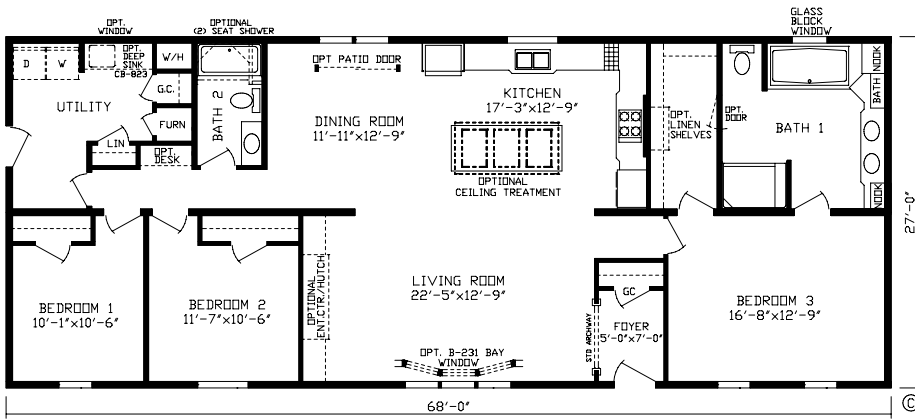
Basement Access



Basement Access
Alternate Stairwell Location
Order No. 66136GA

Basement Access

Timberbrook Estate Order No. 66116 1,620 Sq. Ft.
Reverse Floorplan Available



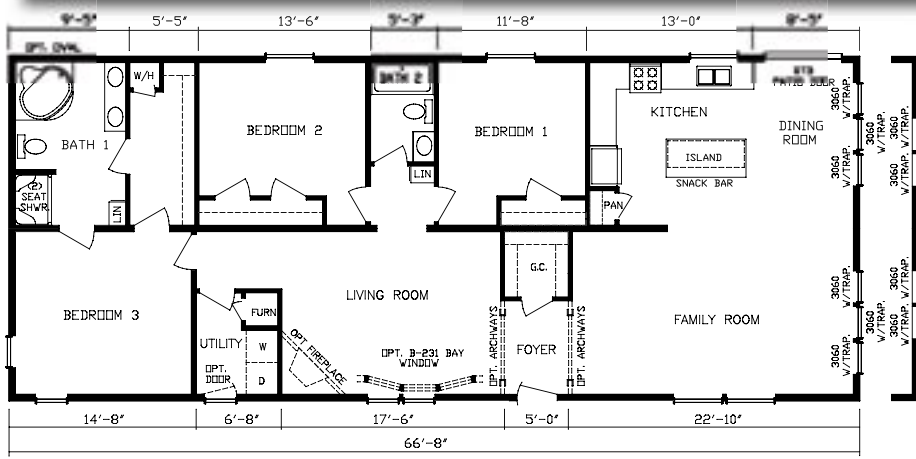
Basement Access

Sea Island Manor Order No. 66144 1,836 Sq. Ft.
Reverse Floorplan Available



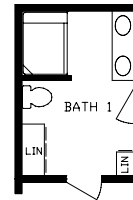
Sea Island Manor Kitchen*

Luxurious Kitchens with Ample Storage

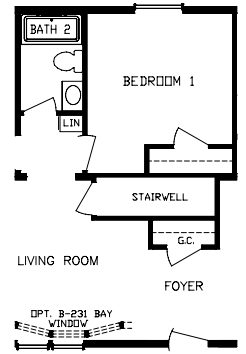


Rock Springs Estate Order No. 66102 1,800 Sq. Ft.
Reverse Floorplan Available

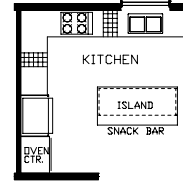
Optional End Wall
Required w/ 5 & 7/12 Roof



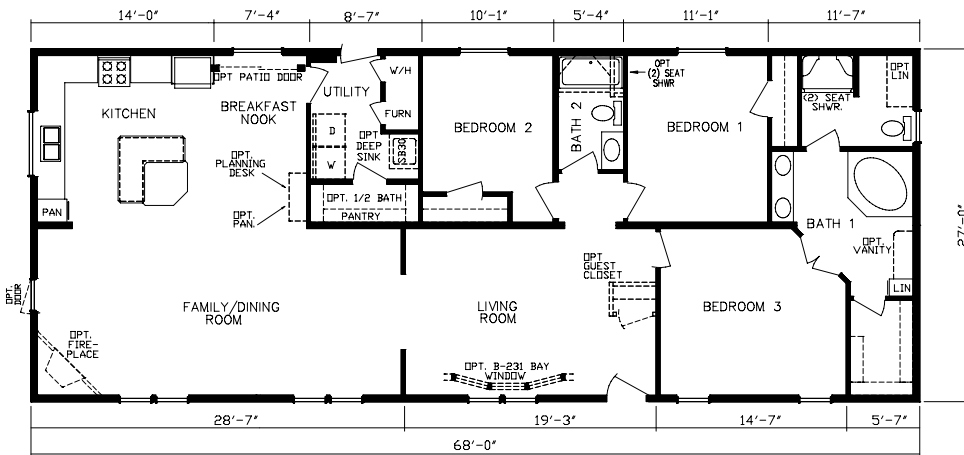
RO-3313



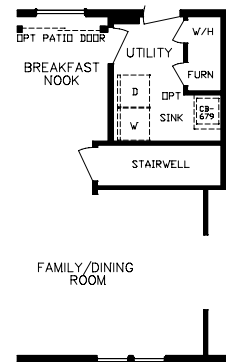
Basement Access



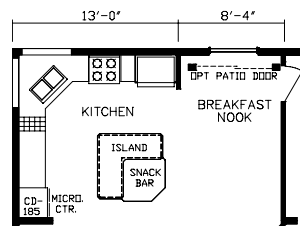
RO-4395



Savannah Park Order No. 66113 1,836 Sq. Ft.
Reverse Floorplan Available



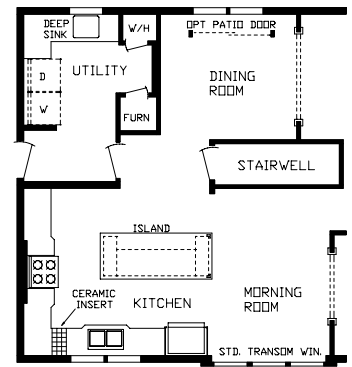
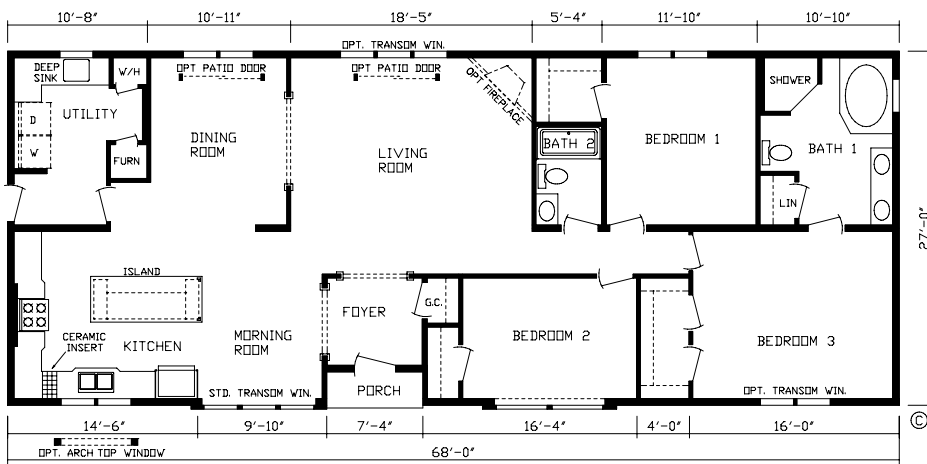
Basement Access



RO-2436
N/A w/ 7/12 Roof




Remington Estate Order No. 66118
Shown w/o Porch Order No. 66118GA



Basement Access

Remington Estate Order No. 66118 1,836 Sq. Ft.
 Reverse Floorplan Available

Cradle Of Strength



The Only Glued And Screwed Floor System In The Industry. Unlike Most Builders Who Use Floor Panels That Are Stapled Only To The Floor Joists, Your Home Will Be Constructed Using A Floor Decking That is Fastened To Joists And Ledgers At The Seam.

40 lb. Snow Load Roof ★★★★★
30 Year Architectural Shingles. ★★★★★
Triple 2x6 Headers On All Windows 30" Wide. ★★★★★
Double 2x6 Headers On All 30" Windows
Double 2x6 Headers Above All Entryways
2x6 Side And End Wall Studs 16" On Center
A Thick Blanket Of R-19 Over All Walls
Double Sealed Roof Edge To Prevent Wind
The Addition Of Steel Strapping
Provide 6 Tons Of Additional Uplift
Provided By Screwed Connectors

★★★★★ 5 STAR

th Construction

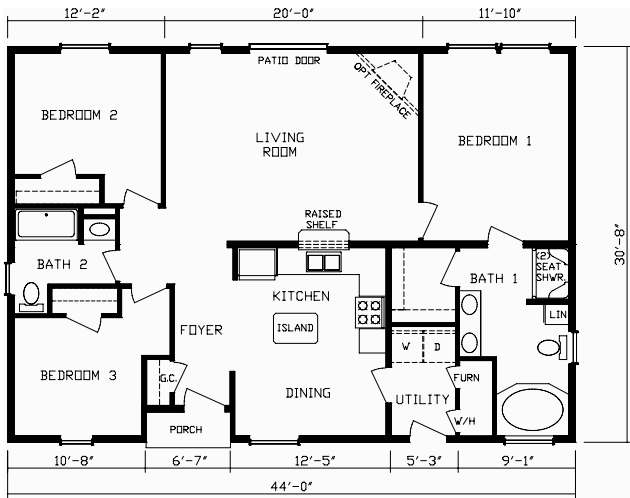


ow Openings Over

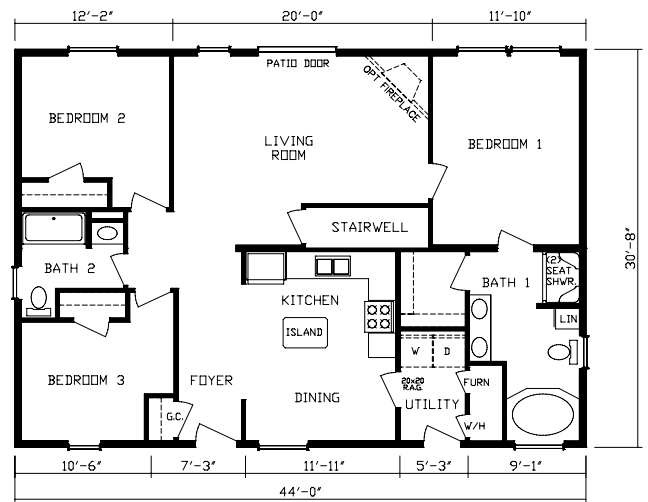
Window Openings. *****
Exterior Doors. *****
" On Center, Featuring
ns Corning Insulation.
event Water Penetration At Eaves.
Along Roof To Wall Intersections
Uplift Resistance Above That
ion Alone In An 80' Home.

Triple 2x6 Plus Laminated Plywood
Header Above Patio Door. *****
Engineered 40lb. Roof Trusses With Steel Plate Connectors At
Critical Joints. *****
All Interior Load Bearing Walls Screwed To Roof Truss And Floor.
Galvanized Steel Strapping From Sidewall To Floor.
2x6 Floor Joists 16" On Center With Steel Strapping To Wall Studs.
Structural Board Sheathing To Add extra Strength To Sidewall
And Endwall. *****

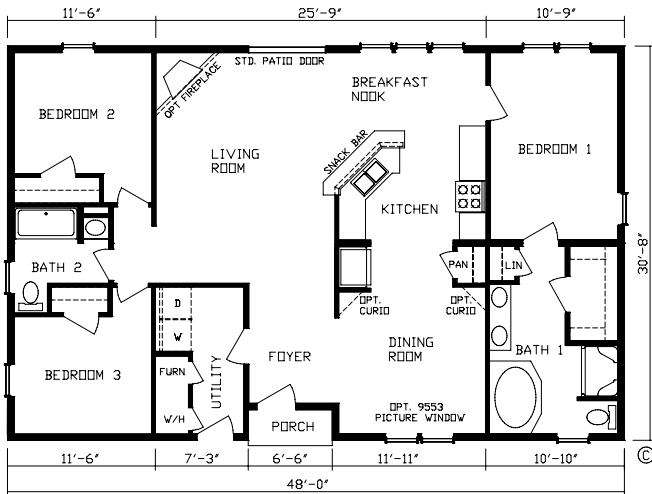
R CONSTRUCTION FEATURES OF FOXWOOD.



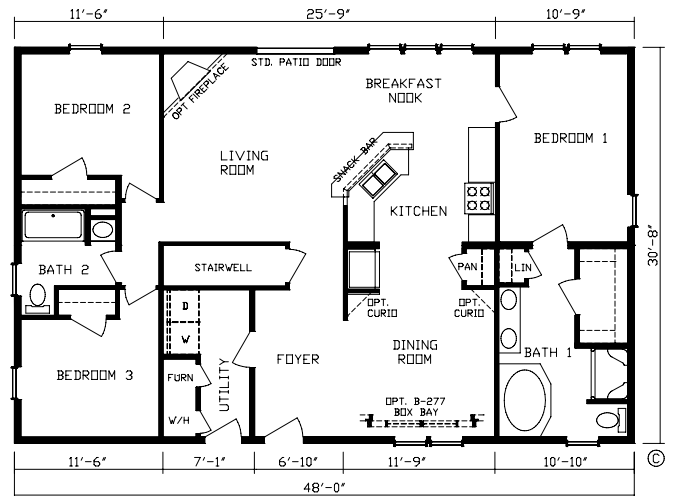
Covington Estate Order No. 66120 1,349 Sq. Ft.
Reverse Floorplan Available



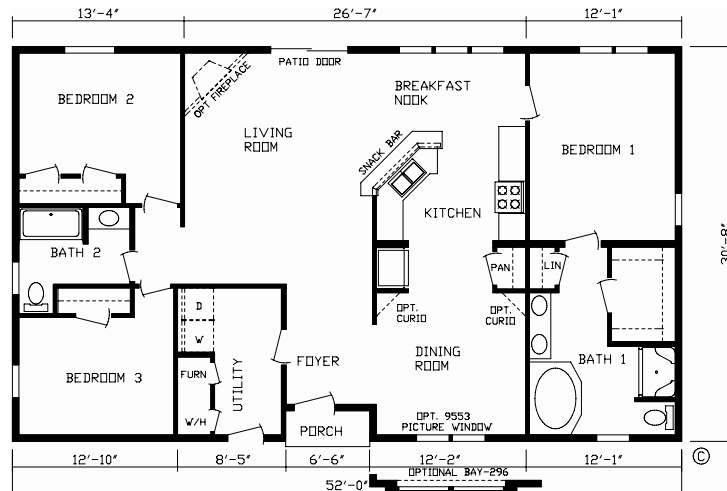
Basement Access



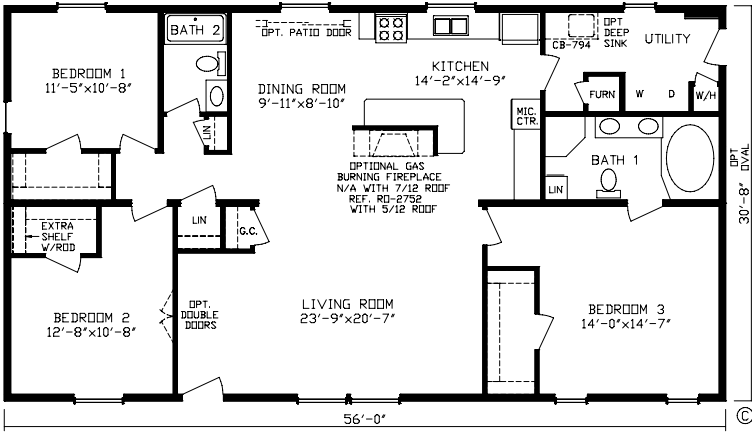
High Point Estate Order No. 66121 1,471 Sq. Ft.
Reverse Floorplan Available



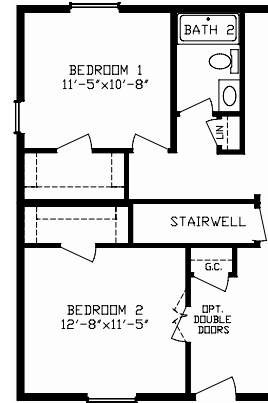
Basement Access



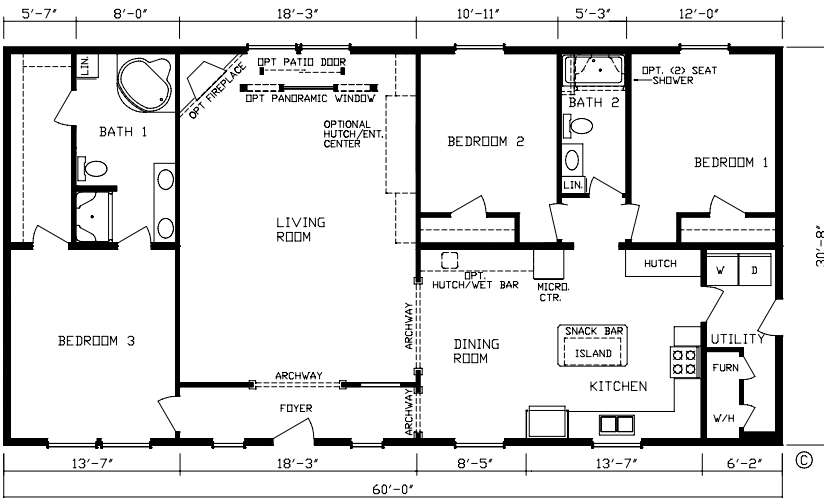
High Ridge Manor Order No. 66132 1,606 Sq. Ft.
Reverse Floorplan Available



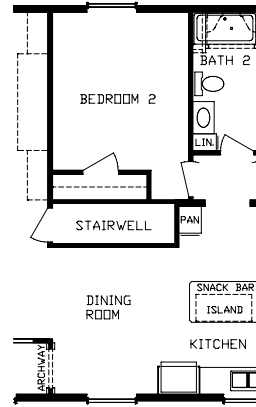
Cortland Manor Order No. 66122 1,717 Sq. Ft.
Reverse Floorplan Available



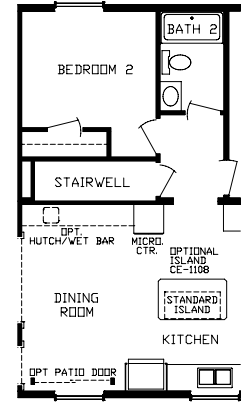
Basement Access



Bennington Estate Order No. 66127 1,840 Sq. Ft.
Reverse Floorplan Available



Basement Access

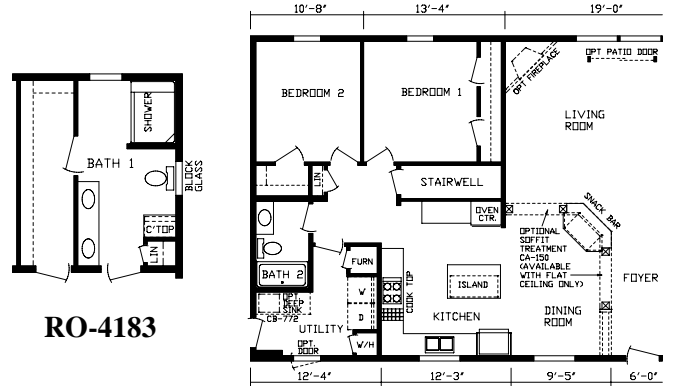
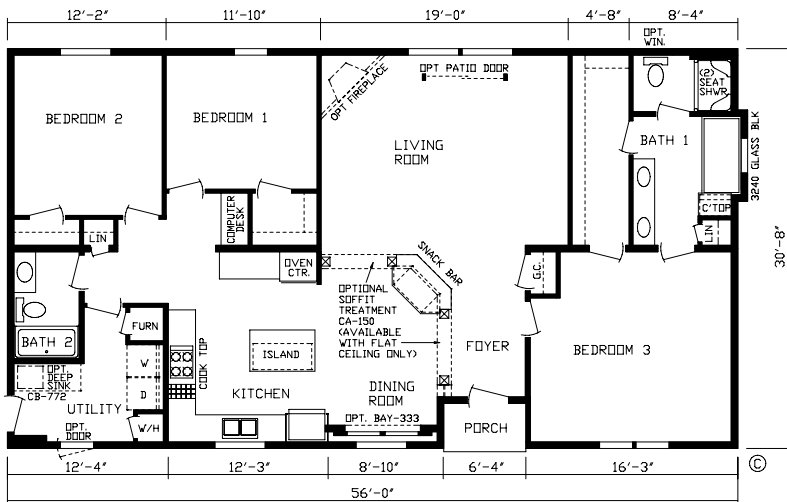


Basement Access
Alternate Stairwell Location
Order No. 66134GA



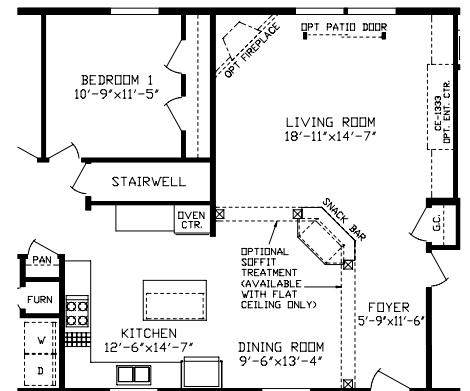
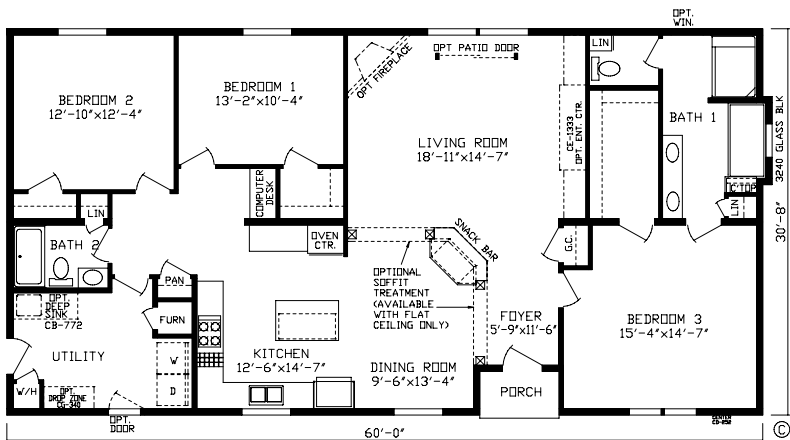


Hillsboro Estate Order No. 66138
Shown w/o Porch Order No. 66138GA



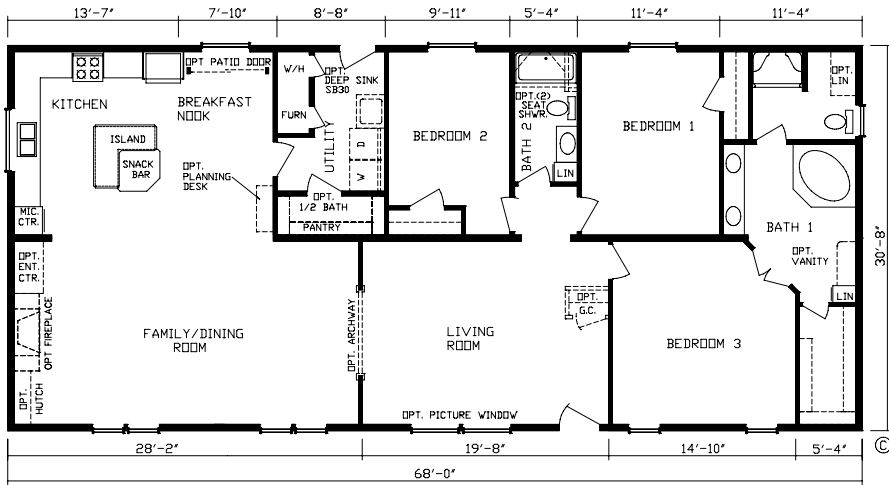
Hillsboro Estate Order No. 66138 1,717 Sq. Ft.
 Reverse Floorplan Available

Basement Access

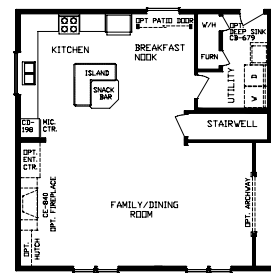


Northbrook Estate Order No. 66143 1,818 Sq. Ft.
 Reverse Floorplan Available

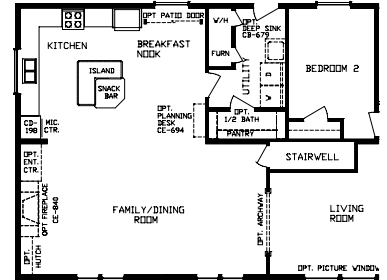
Basement Access



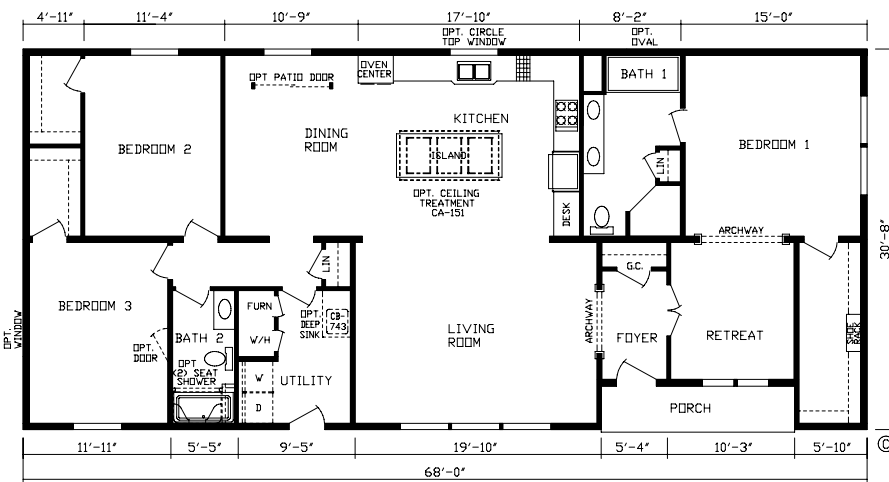
Atlanta Manor Order No. 66125 2,085 Sq. Ft.
Reverse Floorplan Available



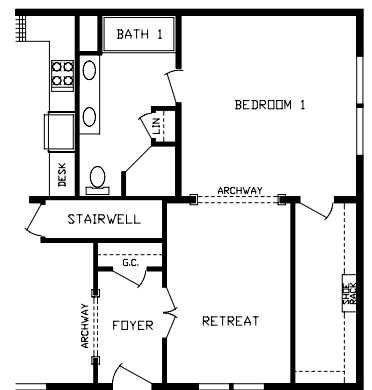
Basement Access



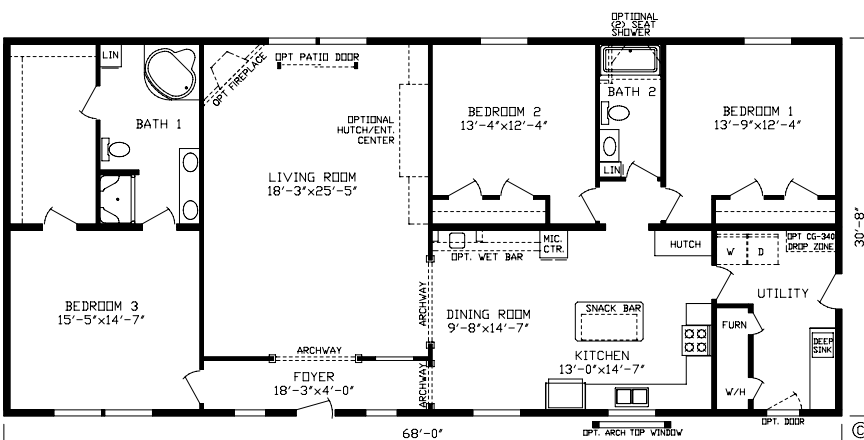
**Optional Stairwell Location
Order No. 66139GA**



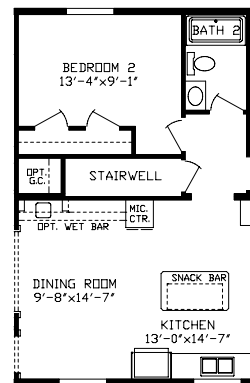
Bainbridge Estate Order No. 66140 2,031 Sq. Ft.
Reverse Floorplan Available



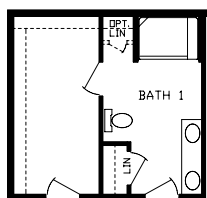
Basement Access



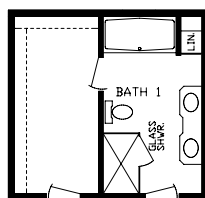
Bradford Estate Order No. 66142 2,085 Sq. Ft.
Reverse Floorplan Available



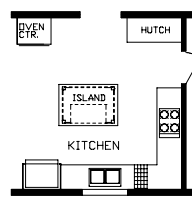
Basement Access



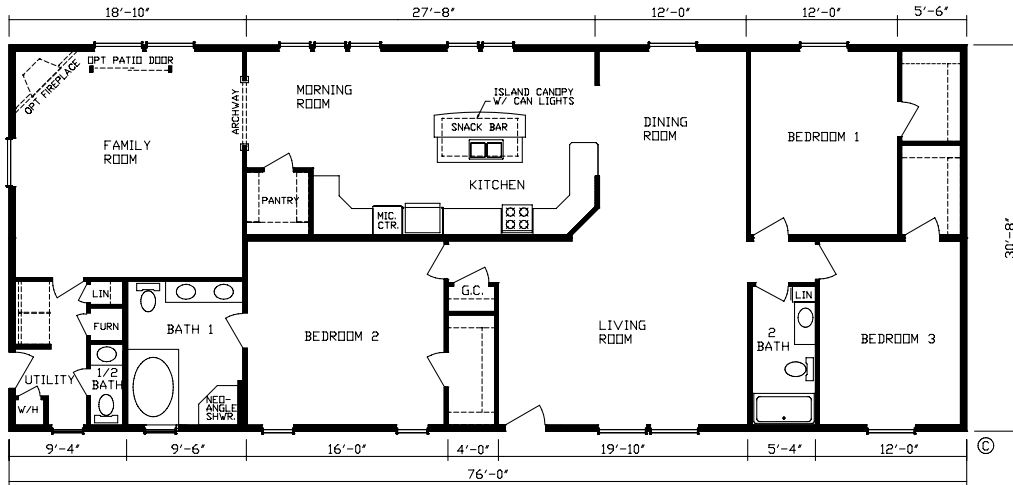
RO-434



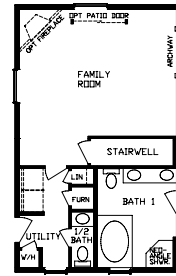
RO-441



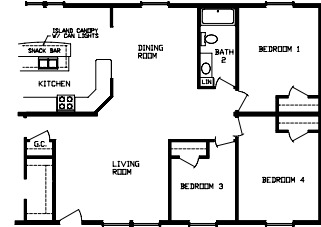
RO-443



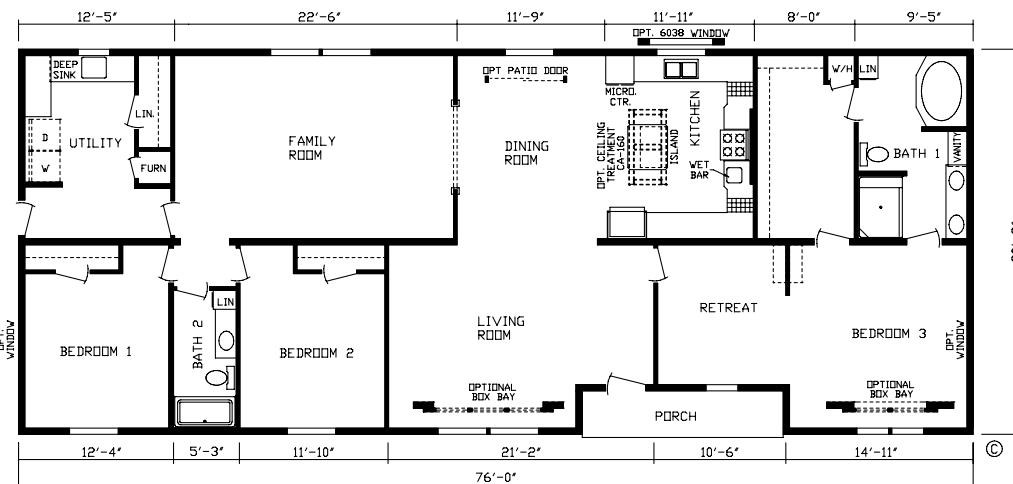
Pine Hurst Estate Order No. 66128 2,330 Sq. Ft.
Reverse Floorplan Available



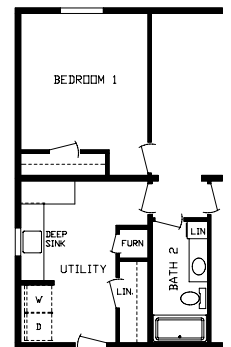
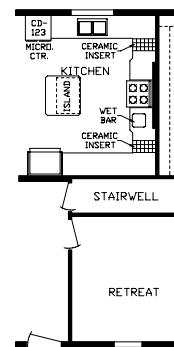
Basement Access



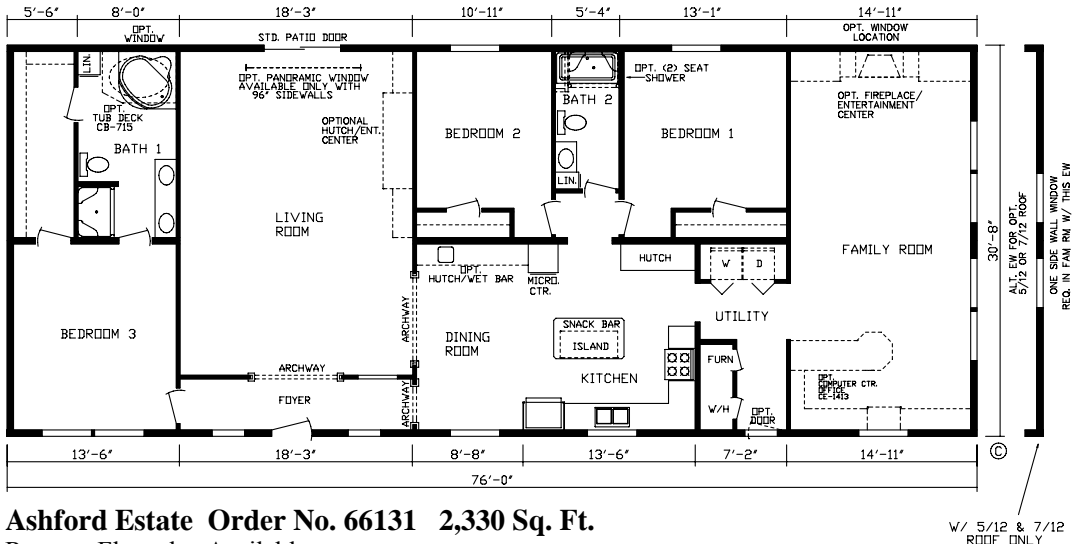
RO-3666



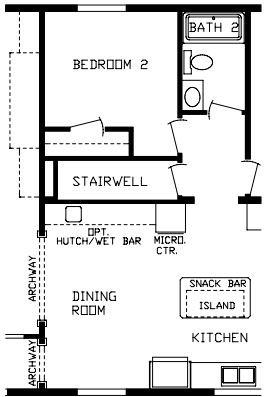
Richmond Manor Order No. 66129 2,330 Sq. Ft.
Reverse Floorplan Available



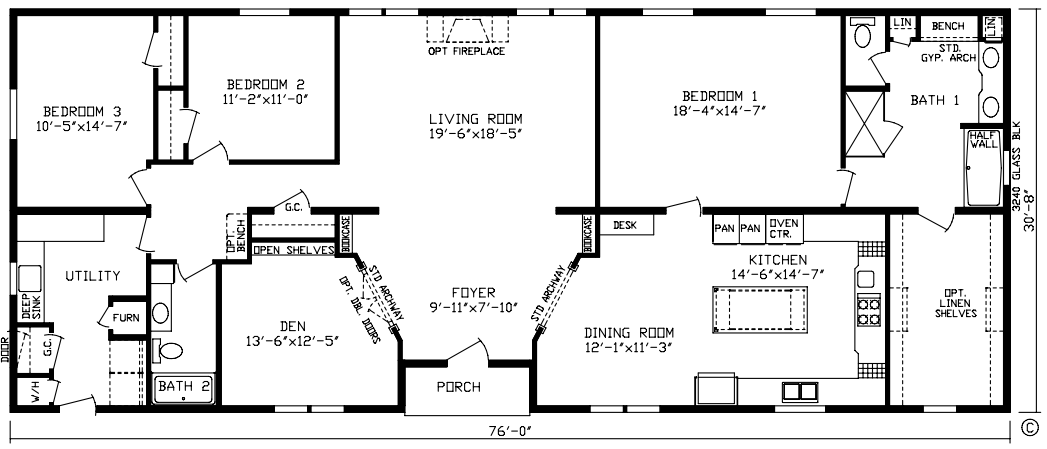
Richmond Manor
Basement Access w/ Opt. Utility
Room
Order No. 66130



Ashford Estate Order No. 66131 2,330 Sq. Ft.
Reverse Floorplan Available



Basement Access



Lake Ridge Estate Order No. 66146 2,300 Sq. Ft.
Reverse Floorplan Available



Lake Ridge Estate Kitchen*



Lake Ridge Estate Living Room*

FOXWOOD SERIES STANDARDS

Energy Saving Standard Features of the Foxwood Home

Kinro Low E Thermopane Window
Exterior Weather Wrap
OSB Exterior Sheathing Sidewalls & Endwalls
R-33 Roof Insulation
2x6 Sidewalls with R-19 insulation
R-11 Floor Insulation
90% Plus High Efficient Trane Gas Furnace
38" x 80" vinyl Clad 6 Panel Front door w/ Storm
34" x 80" Vinyl Clad 6 Panel Rear doors w/ storm

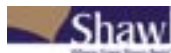


Exterior & Construction

5/12 Roof Pitch
8 foot sidewall height
Flat Ceilings Throughout
40# Middle Zone Construction
Floor Joists 16" O.C.
Full-Width Floor Decking
Perimeter Heat
Third Party Inspection
Interior Walls – 16" O.C.
15" Shutters on Front
Double 4 Vinyl Lap Siding
Architectural 30 Year Owens Corning Shingles
Double Layer tar/paper at All roof Vents and Edges
Double Layer of Shingles at Sidewall Edges

Floor Coverings

25 oz plush nylon carpet
5 pound rebond carpet pad
Congoleum Roll Goods
Tack Strip Carpet Installation



Electrical

Exterior GFI Weather Resistant Receptable
All Copper Wiring
GFI Bath & Kitchen Receptacles
Smoke Alarms
Wire and vent for dryer
Coach Lights All Exterior Doors
Lighted walk-in closets w/ switch (master)
Dining Room Chandelier

Décor

Elegant Designer Draperies with Mini Blinds
2 ¼" Door and Window Casing
Smooth Finished ½" Drywall Throughout
3 ½" Base Shoe Molding

Plumbing

Moen Faucets
Plumb for Washer
40 Gallon Electric Water Heater w/ Double Element
Frost Free Faucet
Water Shut-Off Valves Throughout
9" Deep White Kitchen Sink
PEX Water Lines – Color Coded



Baths

Fiberglass Glamour Tub in Master Bath
48" 2-Seat Shower Stalls Most Master Baths
60" Bench Shower stalls in Some Master Baths (per print)
Elongated China Commodes
Double Bath Lavs in Master Bath (per print)
Bank of Drawers in Master Bath (per print)
One Piece 60" Fiberglass Tub Bath 2
Beveled Mirror w/ wall light – All baths
Power Exhaust fan w/ light – All baths

Doors and Windows

Easy Clean Tilt-out Sash
White Windows w/ grids
Hardwood Window Sills
Dead Bolt Security Lock on Steel Doors
Triple Hinged – Mortised Interior Doors
6 Panel Pre-Hung Interior Doors
Deluxe Lever Interior Doors Handles
32" Passage Doors where available



Cabinetry

Custom Designed Kitchens
Oak Mortise & Tennon Raised Panel Cabinets Throughout
Cathedral Overhead Hardwood cabinet doors
Hardwood Cabinet Stiles – Pre-drilled and Screwed
Deluxe Hidden Hinges
Staggered Kitchen cabinets (per print)
4 ½" Crown Molding – Kitchen Cabinets
Birch Lined Cabinets
Adjustable Center Shelf in Kitchen Overheads
Hardwood Pantry in Kitchen (per print)
Hardwood Linen cabinets Master and Bath 2 (per print)
Wood covered power vent/lighted range Hood Most Models
Dove Tail Drawer Construction
Deluxe Roller & Drawer Guides
Drawer Over Door Construction
Oak Self Edge Countertops in Kitchen
High Pressure laminated Countertops w/ 4" Backsplash in
Kitchen and baths
Slide out Cutting Board
Slide out drawers for Pots & Pans
Slide Out Rack Below Kitchen Sink
Tip Out drawers At Sink
Lazy Susan (Some Models)

Appliances

18 CF Frost Free Refer
Deluxe Gas Range



* PICTURES SHOW VARIOUS FEATURES THAT MAY BE OPTIONAL

Note: Optional wood burning fireplaces are not available when located under the hinged portion of the roof.

© Copyright 2010 Fairmont Homes, Inc Nappanee, Indiana

Note: For model dimensions, our standards and standards of the industry generally include a nominal 4-foot allowance for hitch length plus allowance for other apertures for width and for length normally included in measurements for highway movement. Rear bedroom dimensions include bay, unless bay is optional on a particular unit or is omitted by special order. Room sizes are nominal and sometimes the dimension includes wall thickness. Designs, specifications and prices are subject to change without notice. Some optional items are shown. Some tires, wheels, brakes and axles are reused after careful inspection. 1-10 SP 7.5

Some Images Depicted In This Brochure Show Porches, Garages, or Breezeways That Are Built On Site By Others.

A Family of Housing Companies, Housing America's Families.
P.O. Box 27, Nappanee, IN 46550
www.fairmonthomes.com