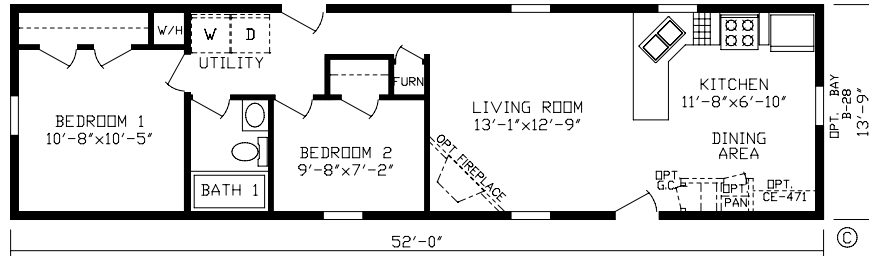
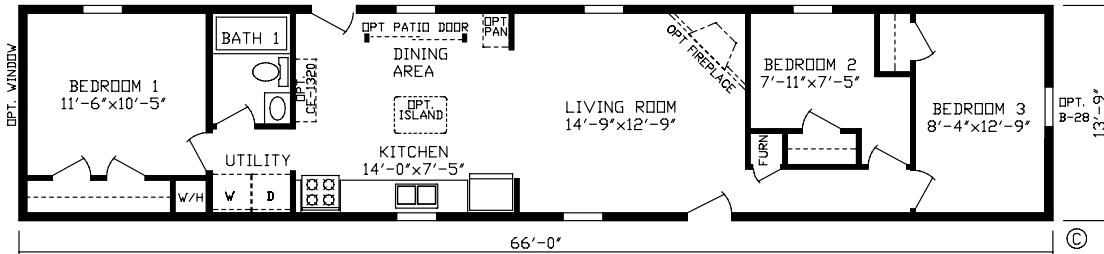


BAYVIEW HOMES

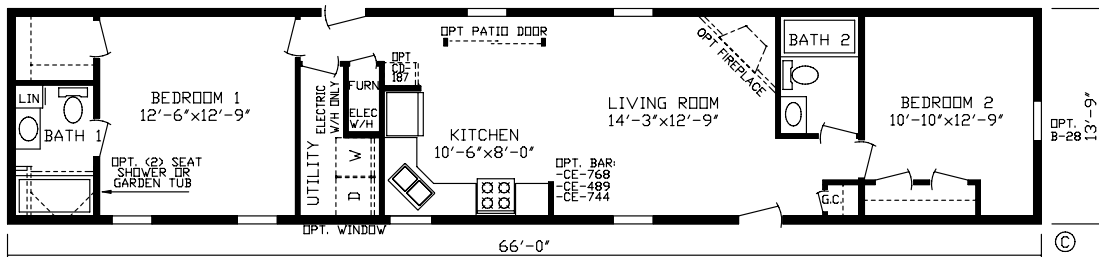
BY FAIRMONT



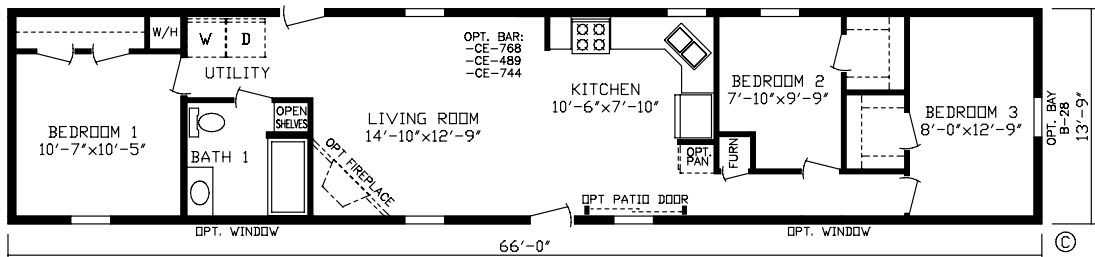
Order No. 6625 715 Sq. Ft.



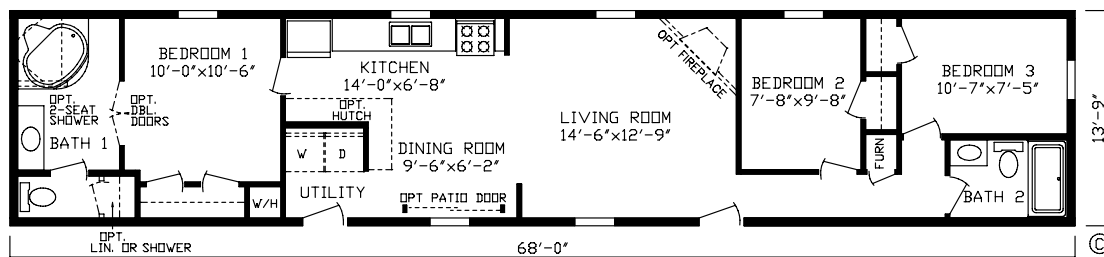
Order No. 6699 907 Sq. Ft.



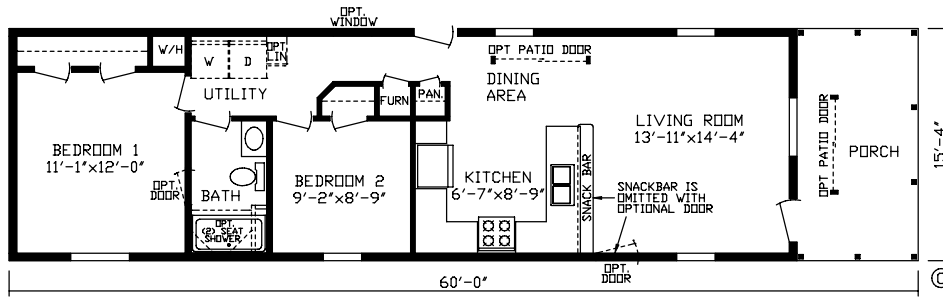
Order No. 6610-1 907 Sq. Ft.



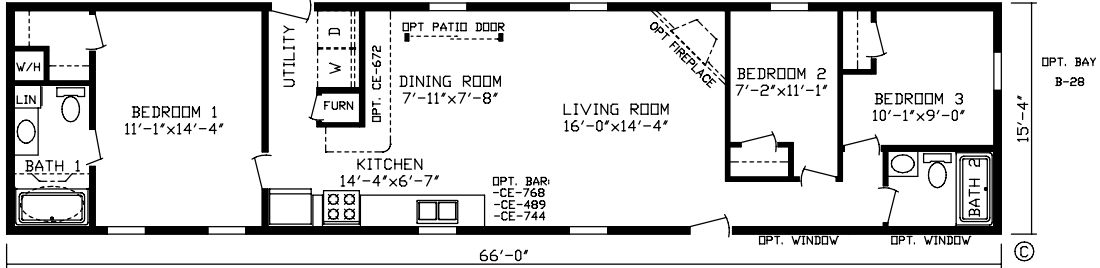
Order No. 6685 907 Sq. Ft.



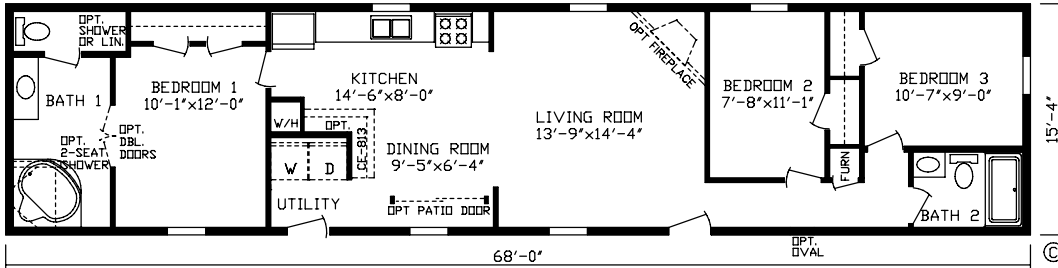
Order No. 6656-1 935 Sq. Ft.



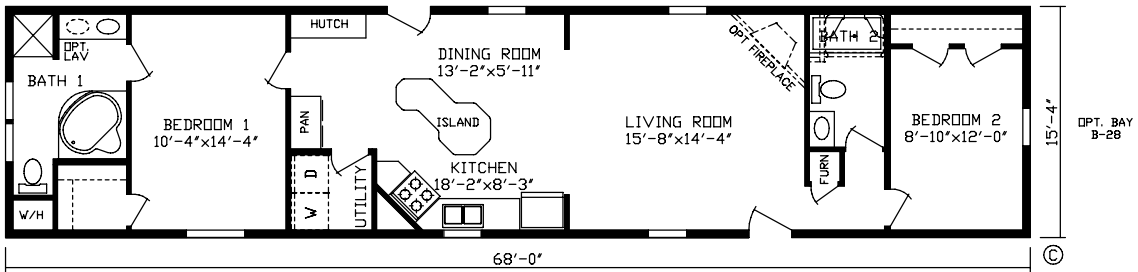
Order No. 6652-1 797 Sq. Ft.



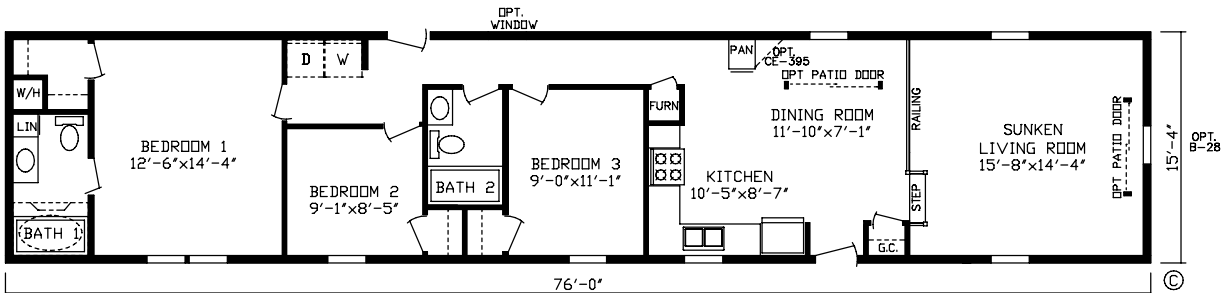
Order No. 6638 1012 Sq. Ft.



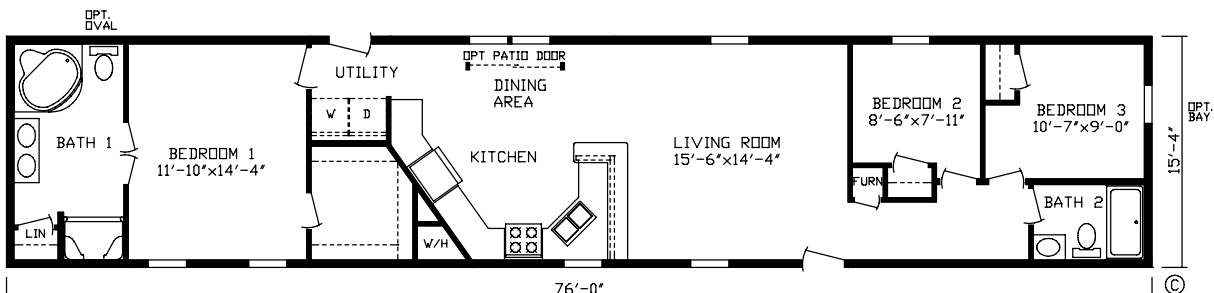
Order No. 6617-1 1042 Sq. Ft.



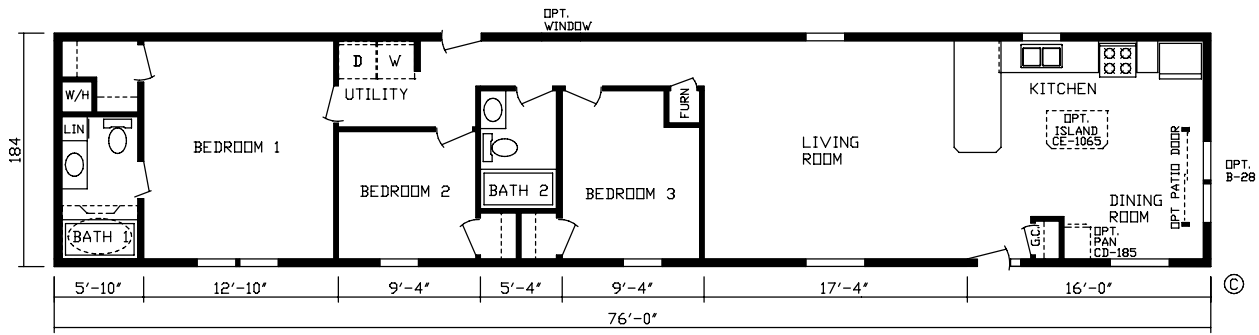
Order No. 6646 1042 Sq. Ft.



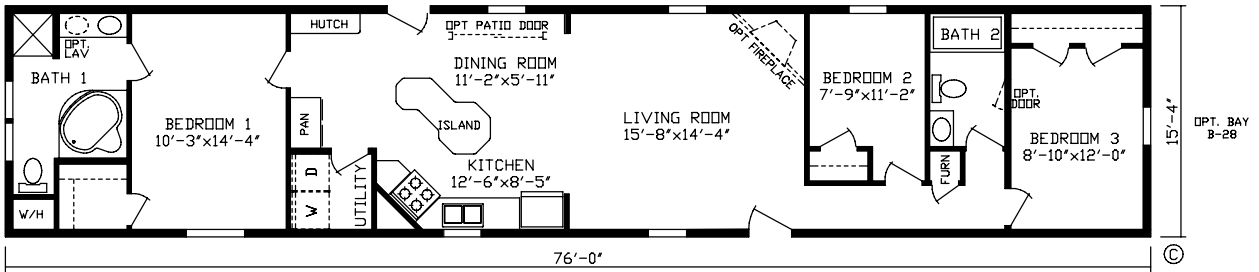
Order No. 6667 1165 Sq. Ft.



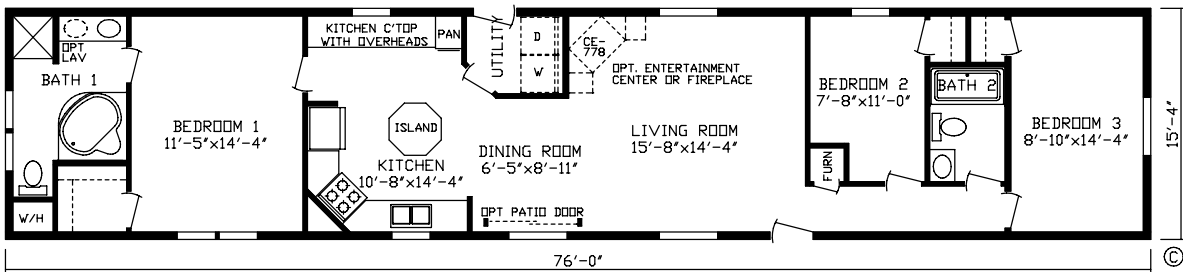
Order No. 6657-1 1165 Sq. Ft.



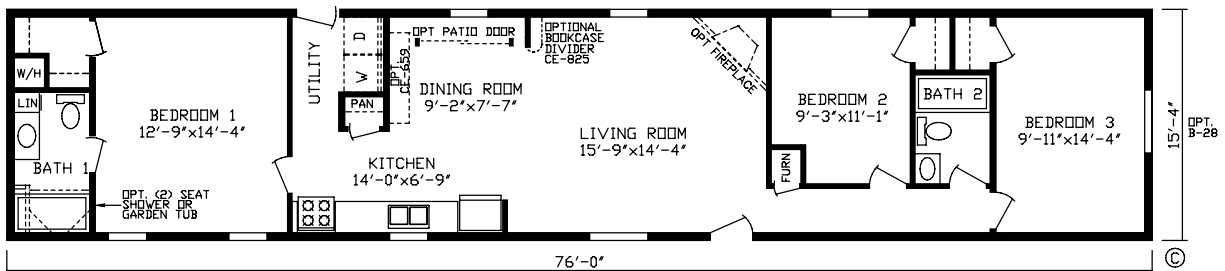
Order No. 6643-1 1165 Sq. Ft.



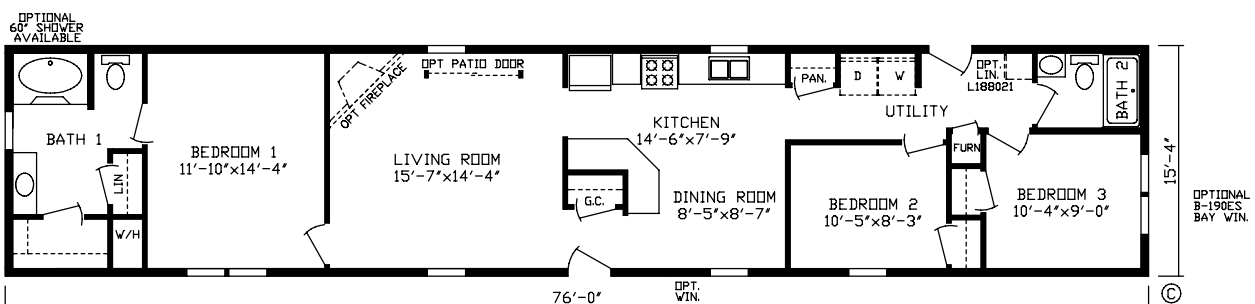
Order No. 6645 1165 Sq. Ft.



Order No. 6633-1 1165 Sq. Ft.



Order No. 6601-1 1165 Sq. Ft.



Order No. 6677-1 1165 Sq. Ft.

BAYVIEW HOMES

BY FAIRMONT

Standard Features

General

- ◆ 30# Roof Load
- ◆ 99" I-Beam Centers
- ◆ Stippled Flat Ceiling
- ◆ 8' Sidewalls Throughout
- ◆ Screwed & Glued Floor
- ◆ Full Width Floor Deck - 8' Wide

Carpet

- ◆ Plush Carpet With 5# Pad
- ◆ Tack Strip Carpet Installation

Furnace

- ◆ Gas Furnace With Black Pipe & Shut Off
- ◆ Positive Operating System
- ◆ E.P. Heat System
 - Gas Furnace
 - Graduated Insulated Heat Duct

Electrical

- ◆ Rust Coach Light At Front & Rear Doors
- ◆ 3 Arm Chandelier
- ◆ Ceiling Lights In All Bedrooms
- ◆ Exterior Weatherproof Recept on Sidewall
- ◆ Smoke Alarms
- ◆ Wire For dryer & Exhaust Duct
- ◆ Kitchen GFI's & GFI Breaker
- ◆ 100-Amp service

Plumbing

- ◆ 30 Gal Electric Water Heater
- ◆ Plumb For Washer

Bath

- ◆ Exhaust Fan In All Baths
- ◆ 60" Tubs With Surrounds

Insulation

- ◆ R-22 Insulation in Roof
- ◆ 2 x 6 Sidewalls With R-19 Insulation
- ◆ R-11 Insulation In Floor

Cabinetry

- ◆ Oak Flat Panel Cabinet Doors
- ◆ Cabinet Pulls
- ◆ Side Mounted Drawer Guides
- ◆ Center Shelf in Kitchen Base Cabinets
- ◆ 36" Tall Base Cabinets
- ◆ Lined Kitchen Cabinets With Adjustable Shelves
- ◆ Wood Breaker Box Cover
- ◆ Drawer Over Door Cabinet Construction
- ◆ Stainless Steel Kitchen Sink

Décor

- ◆ Mini-Blinds Throughout (Unless Drapes Optioned In)
- ◆ Chair Rail on 3 Walls of Living Room
- ◆ 1/2" Gypsum Wall Panels w/ Vinyl
- ◆ Seamless Countertops

Exterior

- ◆ Double 4 Vinyl Lap Siding
- ◆ 25 Year Shingles
- ◆ Exterior Weather Wrap

Doors

- ◆ Brushed Nickel Interior Door Knobs
- ◆ Decorator 6 Panel Front Door w/ Deadbolt & Storm
- ◆ Metal Furnace Door
- ◆ Floor Mounted Door Stops
- ◆ Triple Recessed Hinges
- ◆ 9 Lite Rear Door w/ Storm

Windows

- ◆ Egress Windows In All Bedrooms
- ◆ Low 'E' Vinyl Insulated Thermopane Windows w/ Sealed Grids

Appliances

- ◆ 18 CF FF Refrigerator
- ◆ 30" Gas Range With Shut-Off Valve

Standard Features Shown
A Large Selection of Upgrade Options Available

©Copyright 2008 Fairmont Homes, Inc Nappanee, Indiana
Note: For model dimensions, our standards and standards of the industry generally include a nominal 4-foot allowance for hitch length plus allowance for other appurtenances for width and for length normally included in measurements for highway movement. Rear bedroom dimensions include bay, unless bay is optional on a particular unit or is omitted by special order. Room sizes are nominal and sometimes the dimension includes wall thickness. Designs, specifications and prices are subject to change without notice. Some optional items are shown. Some tires, wheels, brakes and axles are reused after careful inspection. 1-10 SP10



A Family of Housing Companies, Housing America's Families.
P.O. Box 27, Nappanee, IN 46550

www.fairmonthomes.com